

40' PORTABLE STORAGE HIGH-CUBE CONTAINER

FEATURES

- One foot taller than standard shipping container
- Lockable door handles
- Uniformly painted fleet in beige to blend in with surroundings
- Available high-security lock option on all units
- Forklift pockets to facilitate movement and stacking



Expert advice from the same team you have come to trust for your modular solutions. Mobile Modular offers Portable Storage for rent, lease or purchase. Available in 40ft length, our high-cube containers are made to be convenient, safe and secure for all your portable space needs.

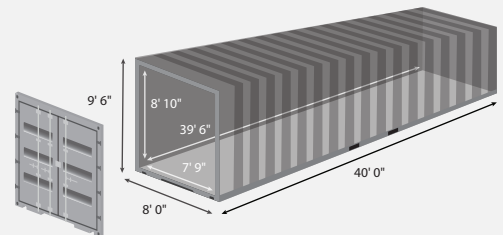
Exterior dimensions

length	width	height
40' 0"	8' 0"	9' 6"

Interior dimensions

length	width	height
39' 6"	7' 9"	8' 10"

Floor plan



All dimensions are nominal.

FOR RENT, LEASE AND PURCHASE

- Variety of office and storage plans
- Streamlined ordering process
- Well-maintained new and refurbished units
- Reliable delivery and pick-up

866.459.7600
mobilemodularcontainers.com

